

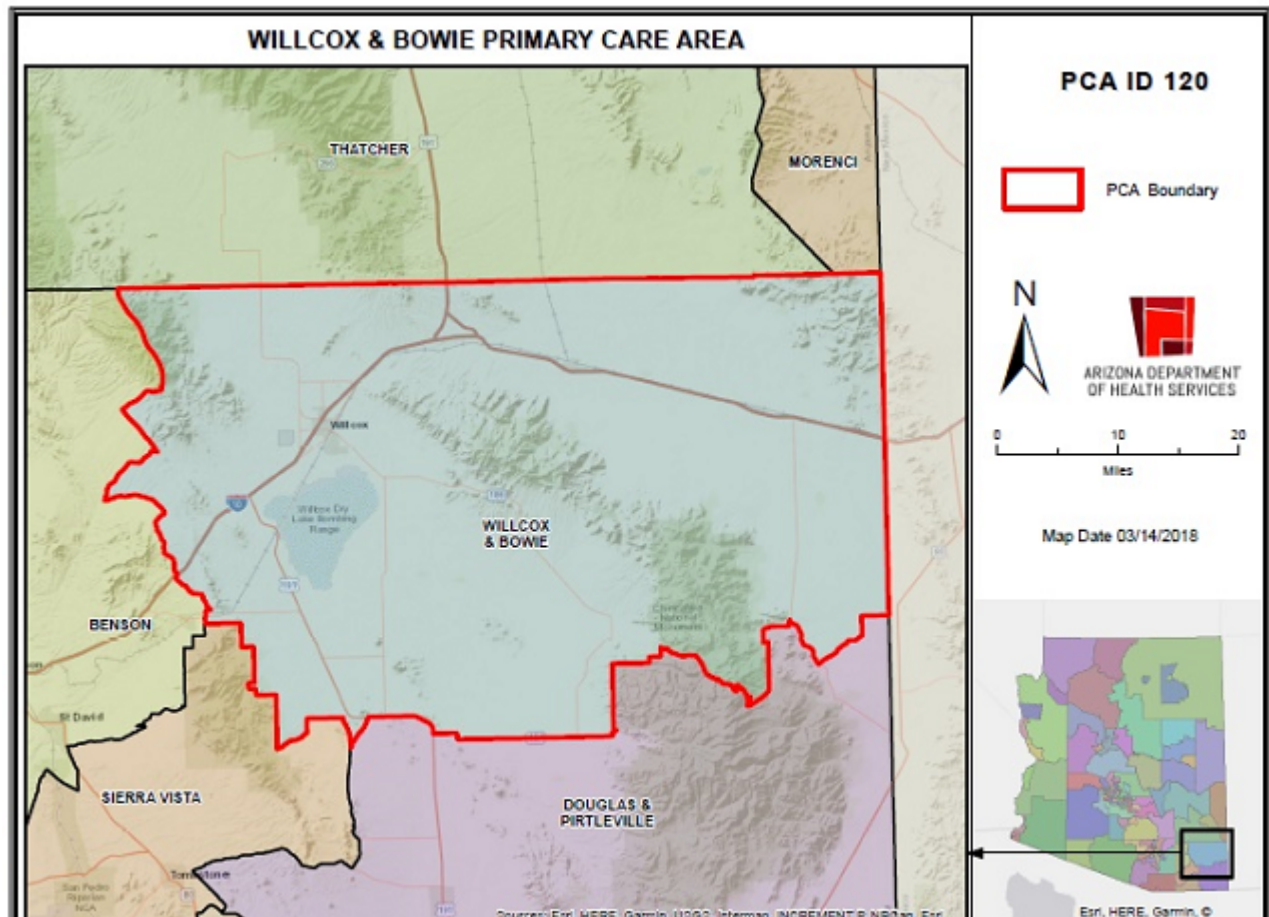
Willcox & Bowie Primary Care Area (PCA)

STATISTICAL PROFILE - 2018

For definitions and sources of data used in these profiles, see:

<http://www.azdhs.gov/documents/prevention/health-systems-development/data-reports-maps/reports/datadocu.pdf>

DESCRIPTION OF AREA	PCA Number	120
	Major Population Center	Willcox
	County	COCHISE
	Health Planning Region	2
	Primary Care Score	52
	Rural Code Designation:	FRONTIER
	Special Tax District?	No
	State House Legislative District	14
	Designated as AzMUA?	Yes
	Designated as Primary Care HPSA	Geographic, (Willcox & Bowie)
	Designated as Federal MUA/P	61.00, MUA, (Bowie/Wilcox)
	Next Nearest Provider	Bowie
	2nd Nearest Provider	Dragoon
	Travel Time to Next Nearest Provider	21 to 30 minutes
	Travel Time to 2nd Nearest Provider	31 to 40 minutes



DEMOGRAPHICS	Willcox & Bowie	COUNTY	HEALTH PLANNING REGION	ARIZONA
POPULATION	12,162	130,319	1,265,542	7,076,199
Population Density	5.9	21.0	54.7	62.1
Persons By Age				
0-14	2,322	24,702	246,757	1,510,985
15-19	797	9,171	92,793	511,100
20-44	2,979	39,217	405,084	2,357,101
45-64	3,562	34,743	326,441	1,730,329
65-84	2,268	20,178	170,047	853,404
85 +	235	2,308	24,420	112,720
Race/Ethnicity				
White	80.7%	81.6%	77.6%	75.6%
American Indian	1.4%	1.2%	3.4%	4.6%
Black	0.7%	4.4%	3.5%	4.2%
Asian/Pacific Islander	0.7%	2.4%	2.6%	3.1%
Other	16.5%	10.4%	12.9%	12.5%
Hispanic	35.3%	32.0%	36.1%	29.6%
Gender				
Females	49.4%	49.0%	50.6%	50.3%
Males	50.6%	51.0%	49.4%	49.7%
Single Parent Families	18.4%	23.8%	28.7%	27.0%
Female Headed Households	9.3%	11.4%	12.8%	12.2%
INCOME				
Population below 100% FPL	16.0%	18.1%	18.5%	17.0%
Population below 200% FPL	42.2%	40.0%	40.0%	37.0%
Median Household Income	\$39,311	\$46,822	\$54,056	\$53,755
Children <12 in Poverty	25.3%	27.2%	27.2%	25.4%
EDUCATION				
Less Than 9th Grade Education	8.4%	5.6%	5.0%	5.9%
9th-12th Grade, No Diploma	9.2%	7.3%	7.4%	7.6%
High School Graduate	32.8%	23.0%	23.0%	24.2%
Some College	27.2%	29.1%	25.8%	25.3%
College or Professional Degree Holder	21.9%	35.0%	38.7%	37.0%
NON-RESIDENT				
Migrant, Agricultural Workers	203	2,143	4,492	67,704
Tourists	69,765	736,607	7,368,152	49,000,000
Winter Residents	154	1,630	9,510	75,670
MISCELLANEOUS				
Unemployed	8.2%	7.7%	8.5%	7.1%
"Uninsured" Births	3.7%	2.1%	3.0%	2.7%
Medicare Beneficiaries	21.3%	18.6%	15.7%	13.9%
Medically Uninsured	14.6%	9.0%	10.7%	12.2%
Transportation Score	110	102	101	109

RESOURCES	Willcox & Bowie	COUNTY	HEALTH PLANNING REGION	ARIZONA
FACILITIES				
General Hospitals	Yes	4	14	63
Hospital Beds/1000 Residents	2.0	1.2	2.3	1.9
Designated as Sole Community Provider?	Yes	4	14	52
Specialty Beds	0	0	501	3,448
Skilled Nursing Facilities	0	4	31	147
Nursing Beds	0	370	3,596	16,204
SERVICES				
Licensed Home Health Agencies	1	6	33	187
Ambulatory Care Sites Type	B, D, E	A, B, C, D, E	A, B, C, D, E	A,B,C,D,E
Licensed Pharmacies	3	25	251	1,324
Certified Ambulance Services	1	10	30	103
PERSONNEL				
Primary Care Providers	10.0	216	3,313	17,864
Ratio-Population:Provider	1,216 :1	603:1	382 :1	396 :1
Nurse Practitioners	4	95	1,354	6,358
Physician Assistants	0	18	240	2,636
Registered Nurses	63	1,081	13,425	74,523
Midwives	0	3	52	200
Dentists	2	45	645	4,091
UTILIZATION				
AMBULATORY CARE SENSITIVE CONDITIONS				
ACSS/1000 Residents Age <65	72.5	54.0	43.4	44.2
Points Above/Below (-) Statewide Average	28.3	9.7	-0.8	***
HOSPITALIZATION				
Inpatient Days/1000 Residents	752	619	589	566
Inpatient Days/1000 by Age Group:				
0-14 yrs	324	329	350	329
15-19 yrs	224	225	235	258
20-44 yrs	463	417	403	394
45-64 yrs	577	562	591	588
65-84 yrs	1,646	1,370	1,306	1,354
85+ yrs	4,449	3,038	2,417	2,399
Leading Diagnosis	Chest pain, unspecified			
Leading Procedure	Introduction of Serum, Toxoid and Vaccine into			
(Non-maternity related)				
*** Not Applicable, ++ Insufficient Data, ## Not Available				

HEALTH STATUS	Willcox & Bowie	COUNTY	HEALTH PLANNING REGION	ARIZONA
INFANT MORTALITY RATE	++	6.4	5.8	5.9
MORTALITY, LEADING CAUSE OF DEATH				
Infant	++			
Child (1-14)	++			
Adolescent (15-19)	++			
Young Adult (20-44)	Accidental poisoning by and exposure to narcotics			
Mid Age (45-64)	Chronic ischaemic heart disease			
Elderly (65-84)	Other chronic obstructive pulmonary disease			
Aged (85+)	Chronic ischaemic heart disease			
PERCENT PREMATURE MORTALITY	55.4%	54.9%	52.2%	54.0%
NATALITY				
Fertility Rate/1000 Females 15-44 yrs	69.4	70.8	63.0	65.8
Birth Rate/1000 Residents	10.4	12.0	11.9	12.7
0-4 Prenatal Care Visits/1000 Births	150.3	89.4	92.7	58.2
Prenatal Care Began:				
None	5.2%	4.5%	3.7%	4.1%
Trimester One	56.2%	69.5%	69.1%	75.0%
Trimester Two	29.4%	19.3%	20.5%	16.1%
Trimester Three	9.0%	6.4%	6.6%	4.6%
Unknown	0.2%	0.3%	0.1%	0.2%
Low-weight Births/1000 Live Births	71.3	78.6	73.0	71.5
Teen Births/1000 Females 14-19 yrs	40.1	32.3	28.1	28.5

2010 Census Tracts in area:

0030001.00, 0030002.01, 0030002.02, 0030002.03

Other Places in area:

Bowie, Bowie Junction, Buckeye Mill, Chiricahua Indian Reservation, Cochise, Dos Cabezas, Kansas Settlement, Luzena, Manzoro, Mineral Park, Olga, Pearce, Rancho Sacatal, Raso, San Simon, Sunizona, Sunsites, Vanar, Wheeler Place, Willcox, Yellow Hammer Mill

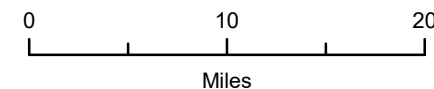
*** Not Applicable, ++ Insufficient Data, ## Not Available

WILLCOX & BOWIE PRIMARY CARE AREA

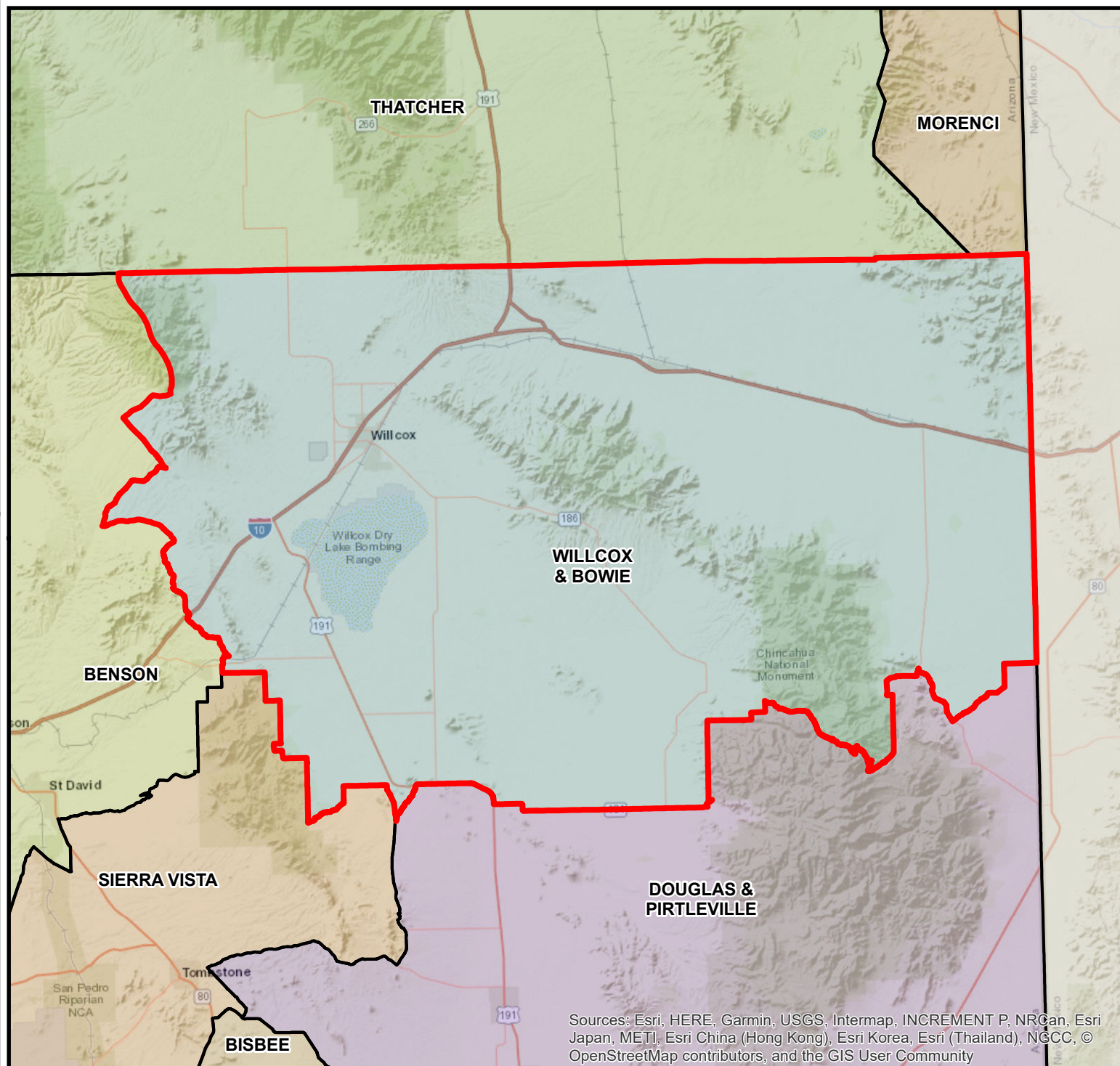
PCA ID 120



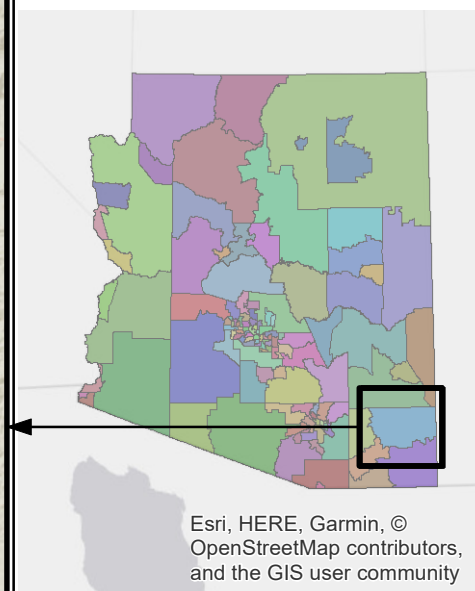
ARIZONA DEPARTMENT
OF HEALTH SERVICES



Map Date 03/14/2018



Sources: Esri, HERE, Garmin, USGS, Intermap, INCREMENT P, NRCan, Esri Japan, METI, Esri China (Hong Kong), Esri Korea, Esri (Thailand), NGCC, © OpenStreetMap contributors, and the GIS User Community



Esri, HERE, Garmin, © OpenStreetMap contributors, and the GIS user community